

ESI JDE Menu Gadget

User's Guide

version 1.x
(27-SEP-2008)

This Guide is Copyright © 2003-2008 Everest Software International Pty Ltd. All Rights Reserved.

LIMIT OF LIABILITY / DISCLAIMER OF WARRANTY: THE PUBLISHER AND AUTHOR HAVE USED THEIR BEST EFFORTS IN PREPARING THIS GUIDE. THE PUBLISHER AND AUTHOR MAKE NO REPRESENTATIONS OR WARRANTIES WITH RESPECT TO THE ACCURACY OR COMPLETENESS OF THE CONTENTS OF THIS BOOK AND SPECIFICALLY DISCLAIM ANY IMPLIED WARRANTIES OF MERCHANTABILITY OR FITNESS FOR A PARTICULAR PURPOSE. THERE ARE NO WARRANTIES WHICH EXTEND BEYOND THE DESCRIPTIONS CONTAINED IN THIS PARAGRAPH. NO WARRANTY MAY BE CREATED OR EXTENDED BY SALES REPRESENTATIVES OR WRITTEN SALES MATERIALS. THE ACCURACY AND COMPLETENESS OF THE INFORMATION PROVIDED HEREIN AND THE OPINIONS STATED HEREIN ARE NOT GUARANTEED OR WARRANTED TO PRODUCE ANY PARTICULAR RESULTS, AND THE ADVICE AND STRATEGIES CONTAINED HEREIN MAY NOT BE SUITABLE FOR EVERY INDIVIDUAL. NEITHER THE PUBLISHER NOR AUTHOR SHALL BE LIABLE FOR ANY LOSS OF PROFIT OR ANY OTHER COMMERCIAL DAMAGES, INCLUDING BUT NOT LIMITED TO SPECIAL, INCIDENTAL, CONSEQUENTIAL, OR OTHER DAMAGES.

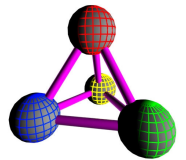
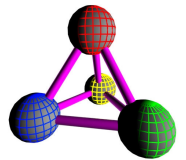


Table of contents:

Table of contents:.....	2
1. Overview.....	3
2. Security vs. Convenience.....	4
3. Installation	5
4. Configuration	7
5 Uninstallation.....	9
6. Troubleshooting.....	11



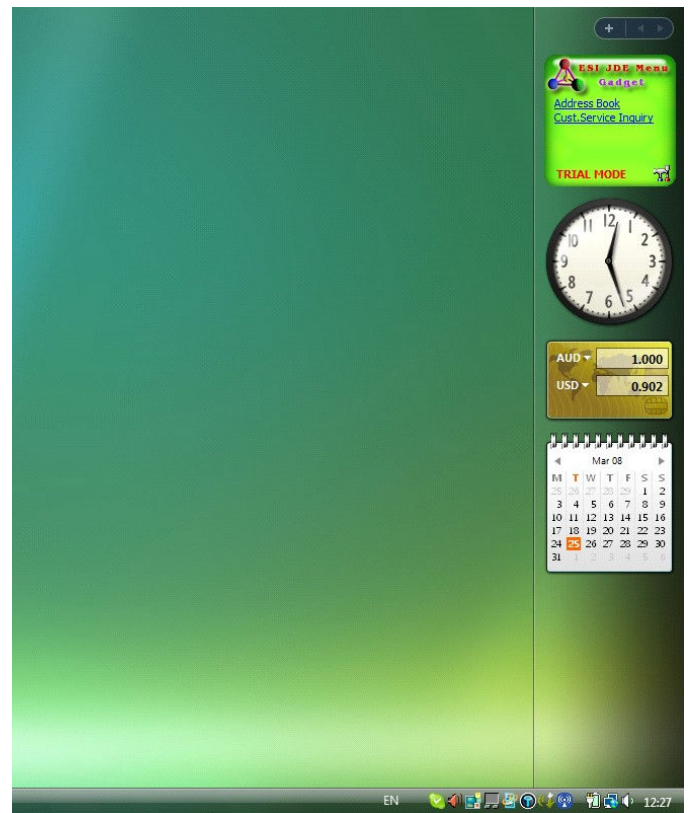
1. Overview

ESI JDE Menu Gadget can be used as a Windows® Vista® SideBar Gadget utility software, that is: it installs into Windows® Vista® SideBar as a gadget (aka “widget”), or as a standalone executable, which will minimize into a Windows tray icon when run, with the menu options available in a pop-up menu on mouse click.

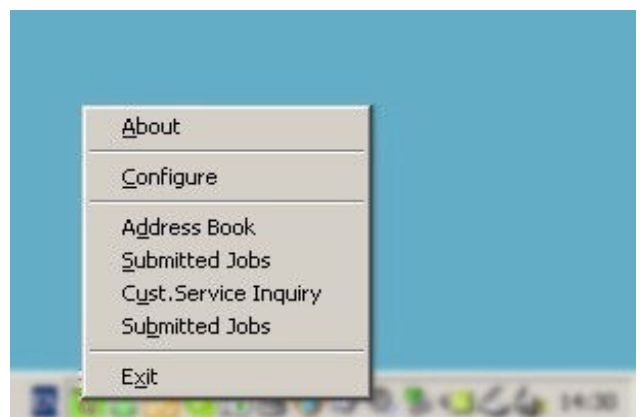
The function of ESI JDE Menu Gadget is to make running Oracle® JDEdwards® WEB applications simple and easy through the use of up to 5 pre-configured shortcuts, always available at hand in the Windows® Vista® SideBar, or Windows® tray in this Gadget.

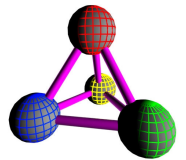
This functionality is supported starting with JDE TR 8.96.E1.

Screenshot – Windows® Vista® desktop, with ESI JDE Menu Gadget running in the SideBar:



Menu displayed when clicking an icon in the Windows® tray:





2. Security vs. Convenience

ESI JDE Menu Gadget allows the users to pre-configure their JDE sign-on credentials. These credentials, including the login name and password are stored in the registry. HKEY_CURRENT_USER registry hive is used to store these details, so they are available only to the original user on the target computer. The password is securely encrypted before being written to the registry. In effect, this arrangement delegates some parts of JDE security management to Windows® and eliminates the need for a Single Signon, because when using the shortcuts in the ESI JDE Menu Gadget, the user will not be prompted to sign in again in JDE.

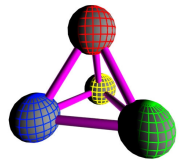
This may appear as a lower security approach than the standard, but in fact the security can be dramatically improved in certain scenarios:

- The signon credentials can be pre-configured (including the encrypted password) and installed for each user by the administrators, so that the users themselves will not be able to use these credentials outside of the ESI JDE Menu Gadget;
- The shortcuts can also be pre-configured and installed by administrators, making it all but impossible for the users to use any other programs outside of those published through the ESI JDE Menu Gadget shortcuts, if the signon credentials are unknown to such users;
- These shortcuts will open the respective programs in full-screen mode and without the usual JDE menu structure on the screen, hence the user will be hard-limited to the running program and possibly any other programs that can be started from this program through hyper-exits (these can be secured from the user in question using JDE security).
- The “Configurator.exe” program is optional – if it’s not installed on the computer in question and all the shortcuts are pre-configured by the administrators, then the users will not be able to change add or remove the shortcuts, limiting them to only those provided to them.

The combination of these features will make your JDE system even more secure, while also dramatically boosting the convenience of the system to users, particularly the infrequent users.

Traditionally, security and convenience of use are the mutually exclusive opposite targets, but with this software, your JDE system can be both highly convenient to use and highly secure at the same time.

The unmatched convenience of using these pre-configured shortcuts will also smooth out any acceptance issues, when migrating your users from the Fat Client or Citrix Client to the new inescapable WEB Client infrastructure. Your users will appreciate the improvement and what can be better for the company, its management and its IT department than when the software users are all happy with the new system!



3. Installation

The ESI JDE Menu Gadget is delivered in an easy to install package. After installation, this new Gadget will be available to every user on the target computer, to be added to the running gadgets in the SideBar. To add it, click on the (+) button at the top of the SideBar:



Which will bring up the list of Gadgets, available for inclusion in the SideBar, including ESI JDE Menu Gadget:



Double-clicking on the ESI JDE Menu Gadget icon will start the gadget.

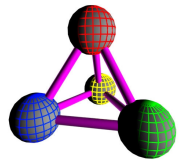
If necessary, ESI JDE Menu Gadget can also be installed for the current user only instead of for every user on the target computer, by using a different installer.

The main functionality of this gadget is delivered in an ActiveX control and so, it does not have to be limited to Windows® Vista® SideBar Gadgets: it's possible and easy to use this ActiveX control on any WEB page, i.e.: your corporate intranet page.

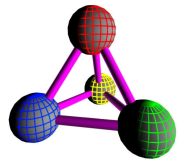
Because it's an ActiveX control, it requires installation by an administrator. Such installation can be automated in a number of ways. If in doubt, or looking for mass-deployment information, please contact us.

The taskbar tray icon version is installed by a different Setup program.

This setup is very simple and intuitive – just run it and follow the prompts.



If the software has been licensed correctly, it will have no restrictions. If not, it will try to acquire a trial license over the internet – if the target computer is connected to the internet and the license has been acquired, it will display “TRIAL MODE” as the last item in the taskbar tray icon’s pop-up menu, or as a separate label on the widget’s screen and will function for a limited time with a 10-second initial visit to Everest Software International®’s WEB site on each shortcut click. If either the license couldn’t be acquired, or the trial has expired, it will show “TRIAL EXPIRED/NOT LICENSED” instead and all functionality will be disabled.

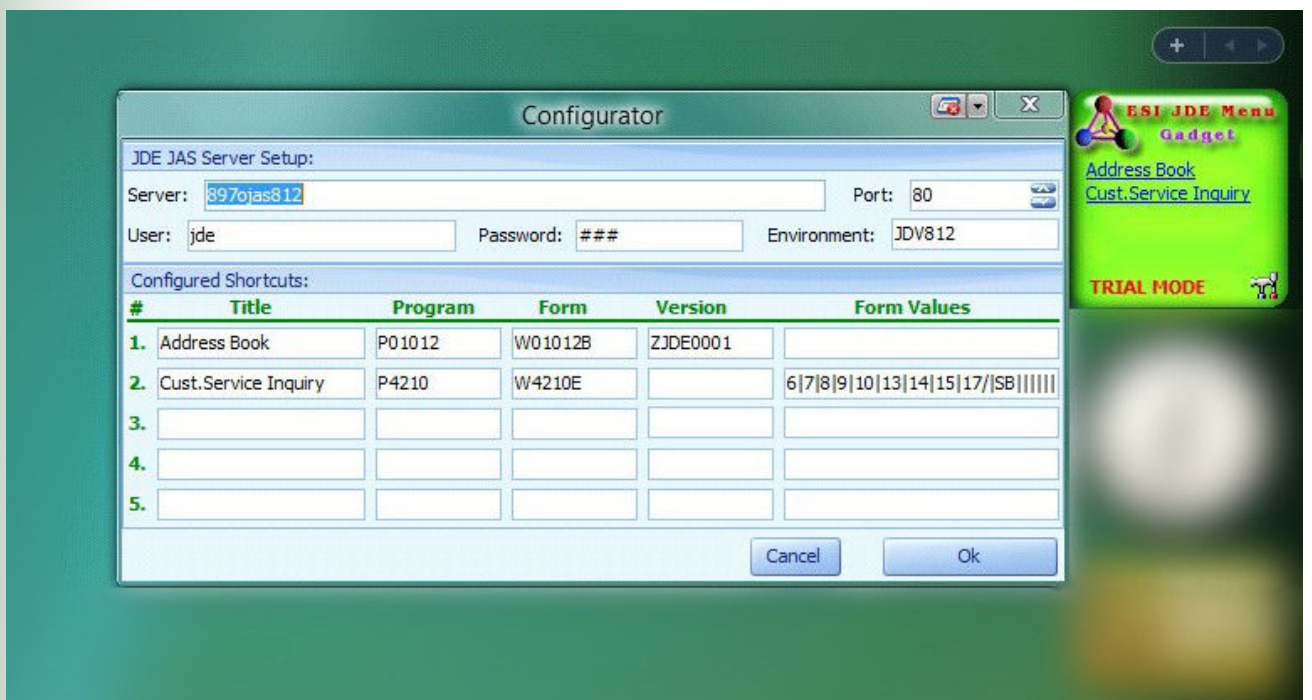


4. Configuration

The running ESI JDE Menu Gadget can be configured by clicking on the configuration button in the bottom-right corner of the gadget's window:



Which will bring up the configuration screen:



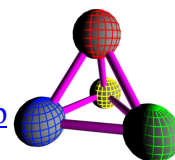
Please, fill in the JAS Server Name and Port Number, signon JDE User Name and Password, signon Environment Name and then configure the shortcuts.

The standard version of this gadget supports maximum of 5 shortcuts, due to the space limitations in the SideBar. Larger custom gadgets can be built on request.

For each shortcut, enter its Display Name (this will be used to show the shortcut in the gadget's window), its associated Program Name and Form Name (mandatory), the optional Version Name and Form Values.

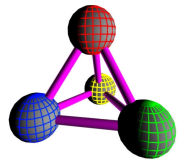
How to build the Form Values string is discussed in this KG paper:

http://www.peoplesoft.com/corp/en/doc_archive/red_paper/rp_e1tools_parameterized.jsp



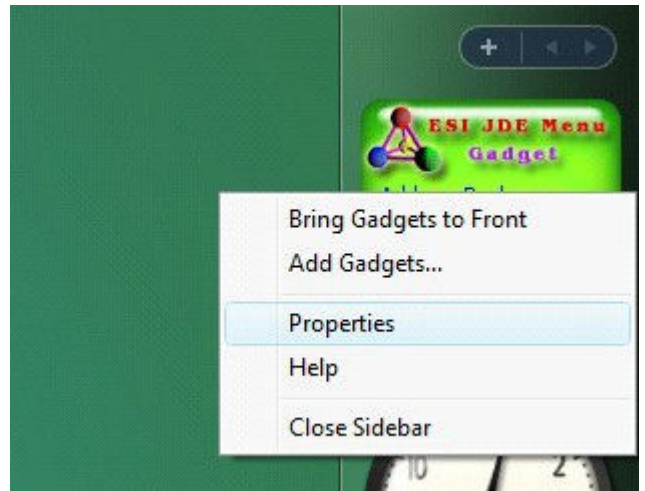
although, please note that the instructions given there may not always produce the results that are working in exactly the expected manner and hence some trial-&-error experimentation may be required. I.e.: in the example given in this paper, to get the Document Type to be entered into the second element of the form structure, it needs to have to be assigned an ID of “7” (see screenshot), which does not match the actual ID of this element. This issue is likely to be just a JDE TR bug and may behave differently at different TR levels.

The syntax for this string, as used in this gadget, is as follows: first, there’s a string of element ID’s, separated by “|” characters, then a “/” delimiter and then a list of values for the specified elements, again separated by “|”s.

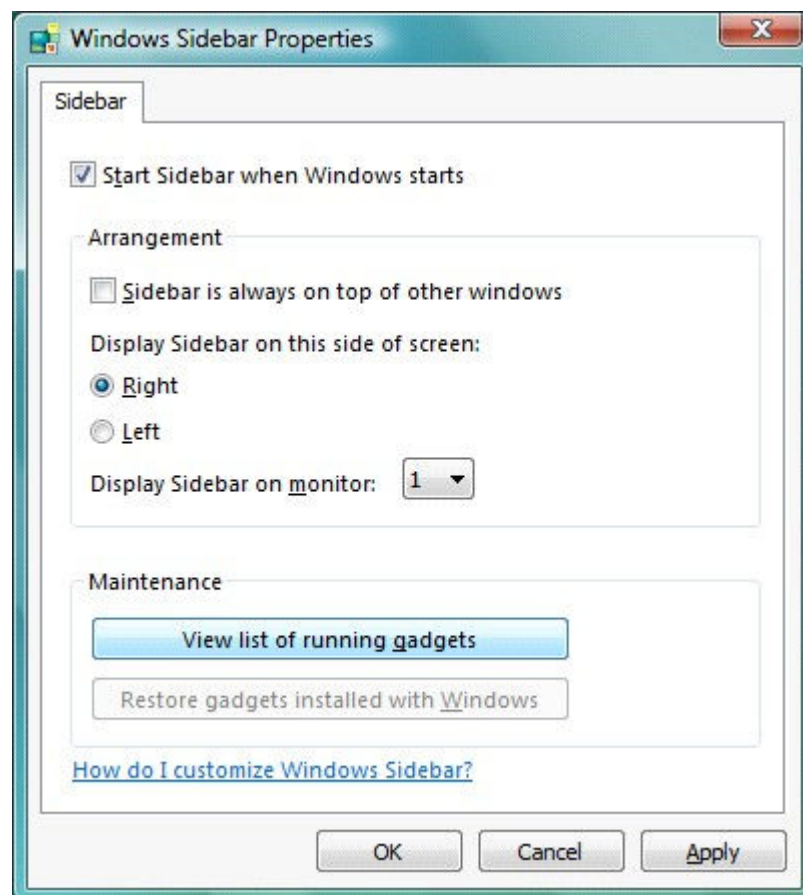


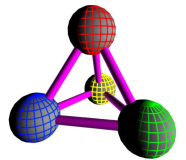
5 Uninstallation

To remove the gadget from the SideBar, right-click anywhere on the SideBar (away from any running gadget) and select the “Property” menu item:

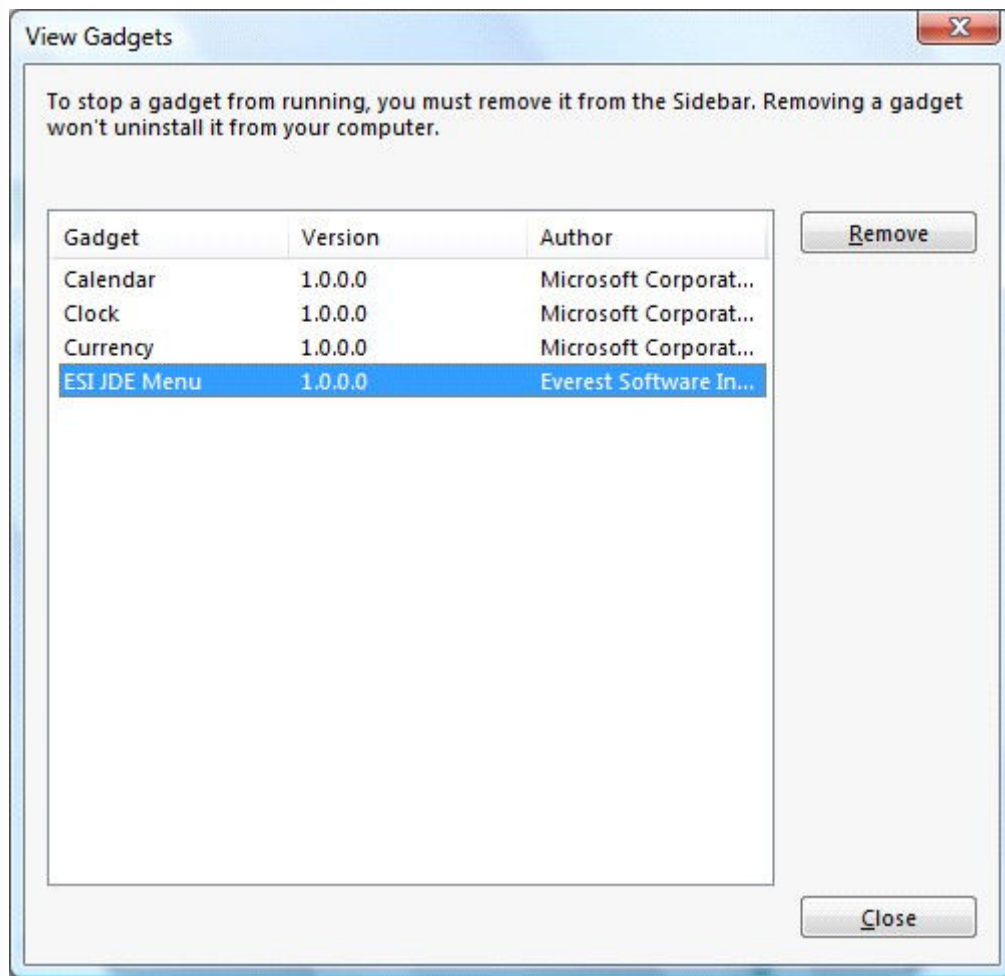


This will bring up the Properties dialog:





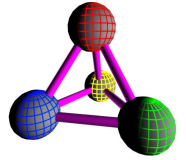
Clicking on the “View list of running gadgets” button will bring up a list of any currently running gadgets:



Select “ESI JDE Menu” and click “Remove” button. This will remove the gadget from the SideBar.

Now, if you need to uninstall the gadget entirely, please run the Uninstall.

To uninstall the taskbar tray version, please use the “Add/Remove Programs” applet in the Control Panel.



6. Troubleshooting

*Please, report all issues to us. Our contact details can be found on our WEB Site.
When reporting issues, please provide as much information and as many screenshots, as possible.*

Currently known issues:

- None

If you experience any issues installing or running ESI JDE Menu Gadget, please, contact us for help.

All reported issues, if we can implement fixes or workarounds in ESI JDE Menu Gadget, will result in an updated version of ESI JDE Menu Gadget being released. If you had issues with an older version of ESI JDE Menu Gadget, there is always a very good chance it may have been rectified since. Please, download and try the latest version.

We are sure you will enjoy using our software!